

Show your working out in your book.



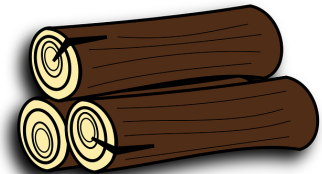
- 1) There are 50 children at an after school football club.  
They are put into 6-a-side teams.  
How many complete teams can be made?



- 2) Six friends go out for a meal. The meal costs £43.20. The cost is shared equally by the friends.  
How much do they each pay?



- 3) A tree trunk has a mass of 350kg.  
It is chopped into 3 equal logs.  
How much does each log weigh to the nearest kilogram?



- 4) It costs £1,100 to stage a concert. Tickets are sold for £8 each.  
How many tickets need to be sold to make a profit?



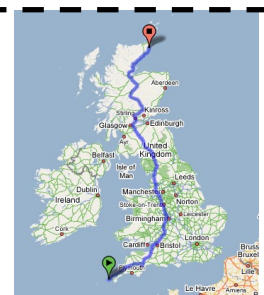
- 5) Tysoe School is buying new chairs. They cost £7 each.  
The school has £650 to spend on chairs.  
How many can they buy?



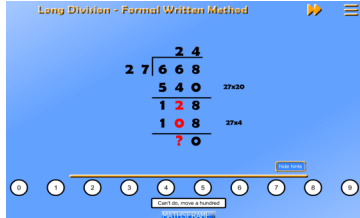
- 6) Mrs Griffin has 5 cats. A bag of cat food has a mass of 4.55kg.  
Mrs Griffin buys a new bag of cat food every week.  
On average, how much does one of her cats eat in one day?



- 7) It is 874 miles from Land's End to John o' Groats.  
Tim wants to cycle this distance in 11 days.  
On average, how many miles does he need to cover each day?  
Round your answer to 1 decimal place.

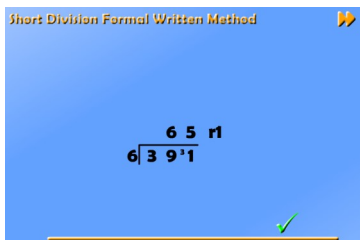


Useful interactive games to teach the skills needed for solving division word problems:



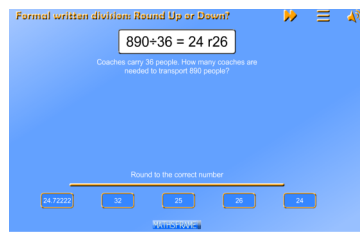
<http://mathsframe.co.uk/en/resources/resource/256/>  
[Long Division Formal Written Method](#)

Practise long division



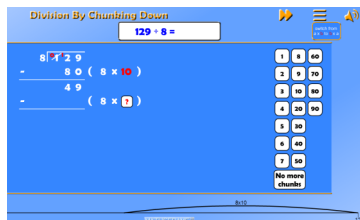
<http://mathsframe.co.uk/en/resources/resource/255/>  
[Short Division Formal Method](#)

Practise short division



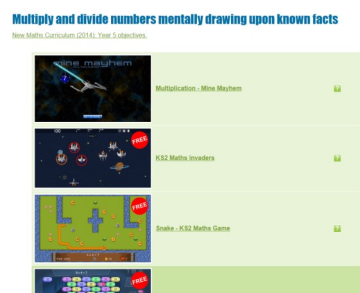
<http://mathsframe.co.uk/en/resources/resource/257/>  
[Formal Written Division Round Up or Down](#)

Answer a word problem which requires that you round up or down, depending on the context, after dividing. Choose either long or short division.



<http://mathsframe.co.uk/en/resources/resource/102/>  
[division by chunking down](#)

Division by chunking - useful as a starting point, and to compare with formal long division.



<http://mathsframe.co.uk/en/resources/category/409/>  
[multiply and divide numbers mentally drawing upon known facts](#)

Lots of games to practice quick recall of multiplication and division facts.

Answers: 1)  $50 \div 6 = 8 \text{ r } 2$ , so 8 complete teams

2)  $43.20 \div 6 = \text{£}7.20$

3)  $350 \div 3 = 116.67\text{kg} = 117\text{kg}$  rounded to nearest kg

4)  $\text{£}1100 \div 8 = 137.5$ , so 138 tickets (round up)

5)  $650 \div 7 = 92.86 = 92$  chairs (round down)

6)  $4.55 \div 7 = 650\text{g}$        $650 \div 5 = 130\text{g}$

or  $4.55 \div 5 = 910\text{g}$        $910 \div 7 = 130\text{g}$

7)  $874 \div 11 = 79.4545$ , so 79.5 miles to 1dp